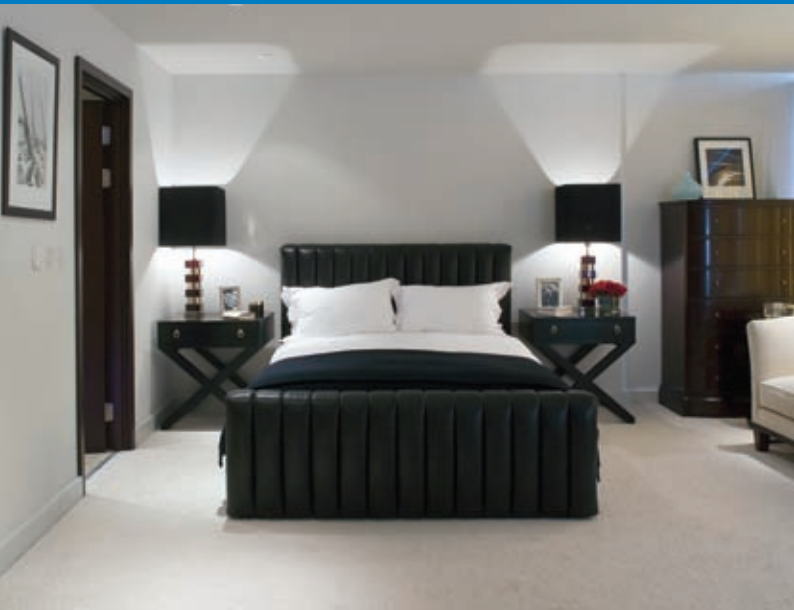


Transform the light in your home





## AT HOME WITH LIGHT AND SPACE

There is a space in your home. As the pioneers in light control, we call it the space between “on” and “off”. A space where light is no longer merely functional. Where it becomes part of your décor. Where it enhances every experience that you associate with your home. That moment you step over the welcoming threshold. An evening curled up on the sofa with a favourite DVD. A laughter-filled dinner party. A serene late afternoon in a quiet corner with a new novel.

Let’s explore this space. Because the fact is that no-one knows more than Lutron about the many benefits of precise light control. How it can create and enhance a mood. Strong and bright. Soft and subtle. Dramatic and theatrical. You are about to see what light can do for your life.

# WHY THE WORLD'S MOST DISCERNING DESIGNERS CHOOSE LUTRON

## LUTRON ARE THE SPECIALISTS IN THE CONTROL OF LIGHT

Having invented the world's first solid-state dimmer in 1961, Lutron now offers an unrivalled range of light control products – from dimmers to shades and blinds to fully automated, fully integrated systems for a whole house. With over 15,000 ways to handle light, we will deliver a truly individual solution for your home.

No-one has put more thought into how your life can be enhanced thanks to the precise control of light. We employ hundreds of qualified engineers. And it is their tireless mission to constantly improve on light control. The result? Lutron has celebrated innovation by filing over 2,700 patents worldwide.

This consistent inventiveness is matched by product excellence and quality control. Every single one of our products is subjected to the industry's toughest testing and backed by equally robust guarantees.

With Lutron, you enjoy the many aesthetic, practical and monetary benefits of light control. With exact mastery over daylight and electric light, you can give each room its own look and feel.



Our keypad faceplates and the fabrics for our shades are available in a wide choice of colours and finishes – to blend harmoniously with your décor. Interior designers appreciate that elegance has always been the hallmark of our approach.

It is hardly surprising, therefore, that for many of the world's leading architects and designers, Lutron is not the first choice, but the only choice.



## GREEN LIGHT

We appreciate that the environment, and particularly the use of energy, is of increasing concern to us all. And while there's much work still to be done in this field, Lutron technology is already making a significant contribution.

We estimate that our customers save 9 billion Kwh of energy a year. That's enough to light 4.5 million homes for a year\* or power and illuminate New York's Times Square for a decade†. Put another way, this is saving as much energy as 2,000 windmills would produce in twelve months.

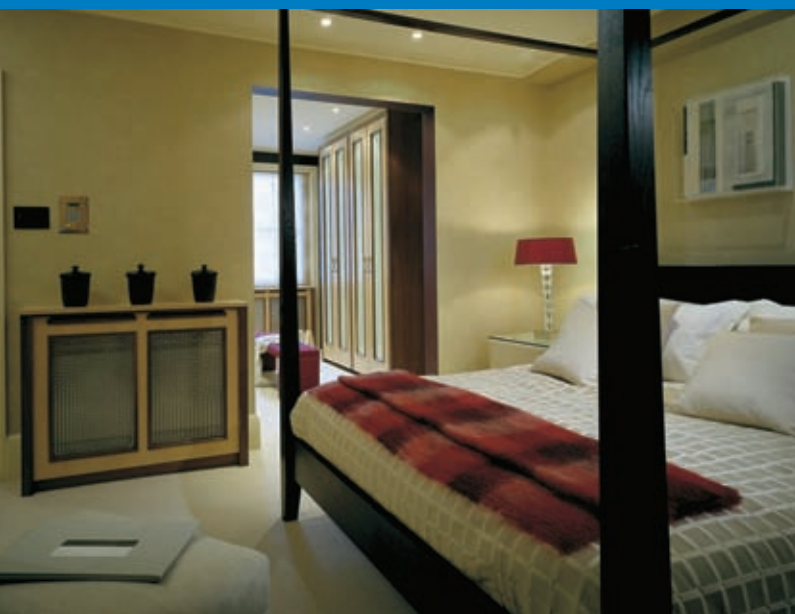
For us, energy efficiency is not a fad, but at the heart of everything we do. As the inventors of the original solid-state dimmer, we have pioneered the value of dimming technology – using a dimmer can extend the life of a light bulb by up to 10 times.

Lutron's shades play their part, too. Controlling daylight can reduce the cost of heating or cooling a house.

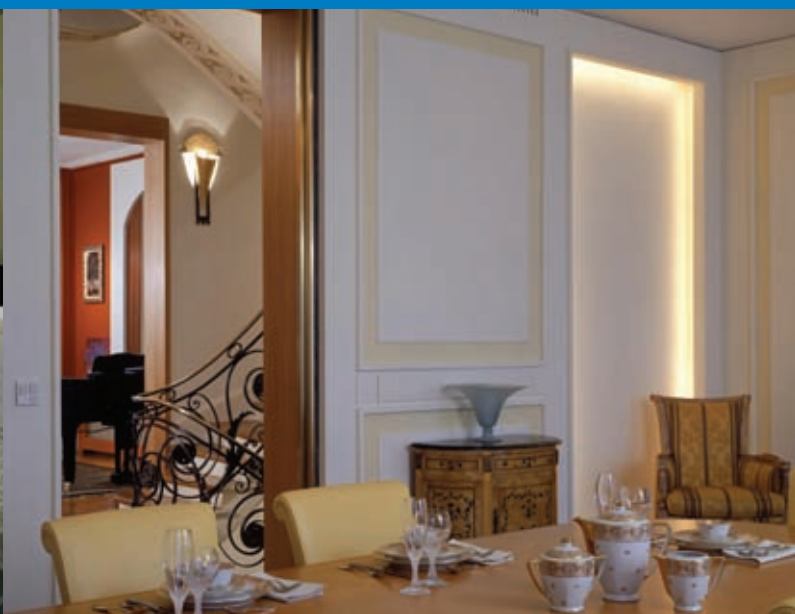
Beyond the home, our products are used to manage the use of natural and electric light in offices, schools and hospitals, helping to save energy – and save money that can be put to better use.

There's no question that controlling light helps reduce our impact on the wider environment. But rather than diminish our own, immediate environment, with Lutron light control, it becomes even more comfortable and stylish.

\* Sources: Massachusetts Institute of Technology (MIT); US Department of Energy and Lutron sales data.  
† As above plus Con Edison



Combining natural with dimmed light



Lighting that helps make the occasion



Perfect light for each task



Sleek, contemporary design to suit your décor

## IT'S ALL ABOUT THE AMBIENCE

Bright and upbeat or calm and sophisticated, you choose different music to match the mood and the occasion. With Lutron's dimmers, you can do exactly the same with light.

At the end of a working day when you just want to relax and watch TV, the lighting in your living room or bedroom should be cosy and warm. When you've set the table for a dinner party, and perhaps lit some candles, you want to adjust the light so that you have just the right balance between the practical and the atmospheric.

With our technology, it's so simple. Yet so effective. That's why so many of our customers have changed from conventional light switches to dimmers – throughout their home.



## SWITCHING FROM SWITCHES



You can start to control light with a single dimmer in just one room. Just remove the conventional light switch and "retro-fit" a Lutron dimmer in the same space. No re-wiring. No redecorating. No hassle. Yet even the control of one light can make all the difference to your lounge, kitchen or bedroom.

With one of our Wallbox dimmers, you can easily and instantly raise or lower the amount of light – more for cooking or entertaining, less for watching TV or working on a laptop. Whatever the task, the mood or the amount of natural light, you can adapt your room lighting to suit.

We offer a full range of light control accessories - allowing you to match your dimmer with your plug sockets and telephone jacks. You could even use a handheld infra-red remote control to adjust the light from the comfort of your sofa.





Daytime scene



Evening scene



Movie scene



TV scene

## LIVING WITH THE CONTROL OF LIGHT

When you decorate your home there is an almost infinite choice of colours. You can think of light in a similar way – there are a vast number of combinations you can select when setting your lighting levels. Each different lighting set-up, or ‘scene’ has a distinct effect on your room and gives you the flexibility to present your home just the way you want.

A “zone” of light could be created from a single light, or a group of lights together – you then control that zone with one dimmer. And your room could have just the one zone, or several.

Lutron’s technology lets you set the light levels for each zone individually or for several zones together to create a harmonious ‘scene’. Different scenes will suit different times of day, activities or moods – and you can recall each one at the touch of a button.

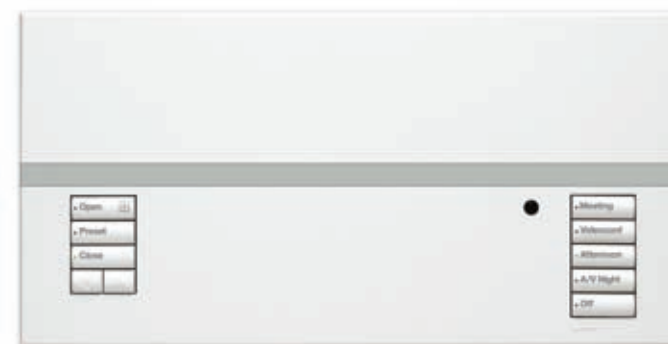
### In one room, you might create six zones like this:

- Zone **1** Black-out shades open or close for viewing movies or blocking out the glare of daylight.
- Zone **2** Recessed downlights room for seating and pathway lighting – back.
- Zone **3** Recessed downlights room for seating and pathway lighting – front.
- Zone **4** Drapes open or closed for the desired ambience.
- Zone **5** Ceiling cove lights for accent and indirect lighting.
- Zone **6** Table lamps for task and accent lighting.

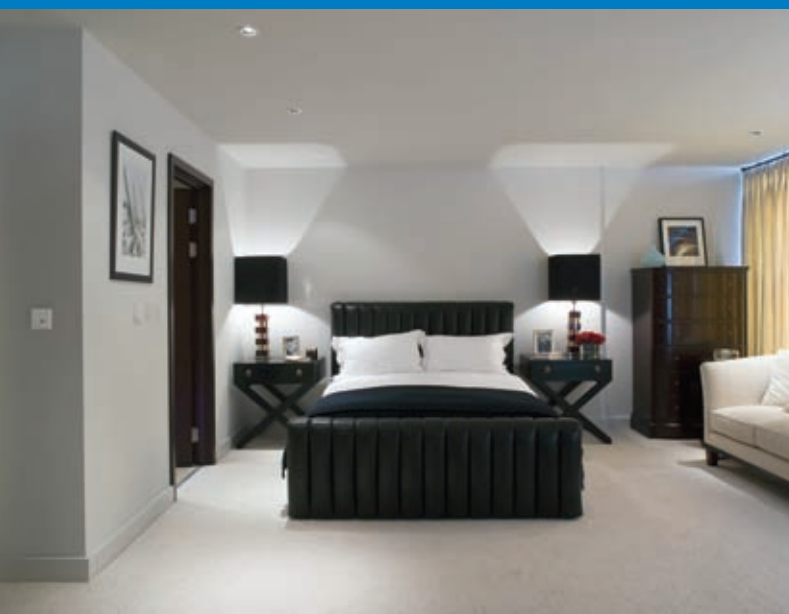
## ONE ROOM. FOUR DIFFERENT WAYS TO SET THE SCENE

Your main living room can act as four different places – as you see here. A place to read or work. A place to relax. A place to watch a favourite movie with your family... or with guests. Now you could set four different kinds of light. And once they are set, you never have to adjust the levels again. With a GRAFIK Eye®, you can retrieve whichever “scene” you want at the touch of a button.

When you’ve created the desired effects in one room, you’ll soon start to picture how GRAFIK Eye could work in your kitchen, bedroom or home cinema. All your fittings, from wall-lights to spotlights, can be connected to the GRAFIK Eye. You can then recall the scene from the main unit or choose from our many different keypad styles for control from other positions.



GRAFIK Eye has the sharp lines and smart finish that suit contemporary interior design. If the look of the latest technology suits a particular room, then a GRAFIK Eye unit will enhance its appearance. On the other hand, if GRAFIK Eye would look out of place with the decor, it can always be discreetly sited in a cupboard, storage area or utility room.



Soft, relaxing light – just when you want it



Precise control of light and shade

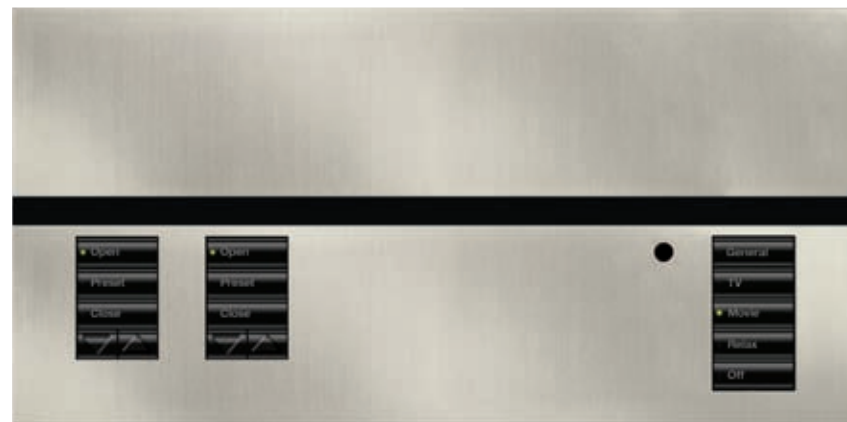


Set the scene at the touch of a button



Dramatic and sensational effects

## DAWN TO DUSK, LIGHT AND SHADE



Even before you get out of bed, Lutron is ready to control the light. With our QS system, a built-in time clock could turn on some of your bedroom lights or part the curtains to gently wake you up in the morning.

You've seen how our GRAFIK Eye® unit lets you set the scene, room by room. Lutron's QS system was designed for rooms where you need to control both natural and

electric light. QS combines the benefits of GRAFIK Eye with our Sivoia motorized window systems.

As well as setting scenes and controlling shades QS is easily integrated into your audio/visual system. One button on a universal remote control can dim the lights, close the shades and turn on the TV – the perfect cinema experience.



The system also helps you save on your energy bill. An information display shows you just how much energy you are saving as you dim the lights, while use of occupancy sensors and the integral timeclock mean the lights are only turned on when you need them – while the shades are in the right position according to the time of day.

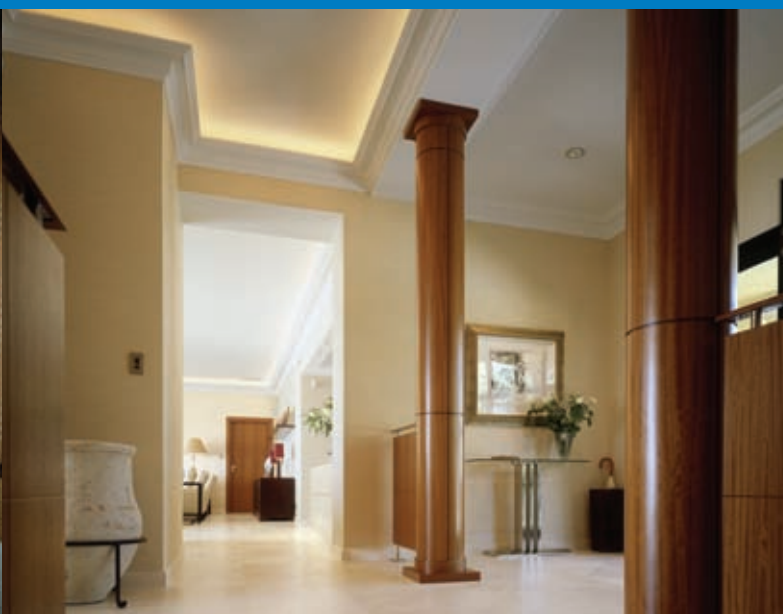
Use QS to control the lights and shades in your main living areas, or expand the system to include the ground floor, bedroom suites or a whole apartment.



A welcoming light



Subtle and restful



Enhance every corner of your home



Pool, terrace, garden – enjoy perfect light

## HOMEWORKS® WORKS FOR YOU



It's late. It's dark. It's wet. You're driving. And you just want to get...home. So imagine that as you turn into the driveway, a series of lights illuminate the way to the garage and the entrance to the house. As you close the door behind you, gentle pools of light warm the hallway to the kitchen, where spotlights pick out the work surfaces, glasses cupboard and fridge.

It all happens at the touch of the button – thanks to HomeWorks. It is the world's most powerful and flexible lighting control system, yet simple to use. You don't have to bother with banks of switches – this is light control from elegant keypads.

With HomeWorks®, you can control every light, curtain and blind connected to the system with any one button. So when you retire to the master bedroom, you can put the whole house to sleep at a touch...lights go off and curtains are drawn in the most relaxing of evening rituals. Conversely, in the middle of the night if a child hears a disturbing noise, they can hit one button to raise all the lights.

HomeWorks will help secure your home, too. A time clock ensures that key outside areas are well lit at night. And when you're out, HomeWorks replicates the normal lighting patterns of your home when it's occupied.

While HomeWorks gives you unlimited control of the light in your home, it also has other substantial benefits. HomeWorks can be integrated with your security system's sensors to provide light when they're activated...and integrated with your entertainment systems to soften the light as the projector lowers ready for the title sequence to roll in your home cinema. You can even access your HomeWorks over the internet when you are away, perhaps to turn on the lights when you recall that your house guests will arrive early.

Like a thoughtful and meticulous butler, HomeWorks does more than follow your every wish – it anticipates your needs, making you feel truly at home.



Controlling daylight – easily



Bespoke shading systems

## LIGHT AND SHADES

While often welcome, the warmth and light of the sun sometimes needs managing. Now with Lutron, you can control daylight in your home just as easily as you control any electric light.

Our Sivoia range of curtains and blinds help you create your perfect environment, instantly, smoothly and quietly – because all the technical ingenuity you find in our dimmers is matched by the market-leading quality of our motors.

For total flexibility, our window systems can work on their own or combined with GRAFIK Eye®, QS® or HomeWorks®. Now you can adjust the daylight in tiny increments – so you can work on your laptop in comfort, watch your favourite film or protect a valuable painting from UV damage.

However, control is only one side of the story. The choice of fabric is equally important, for practical and aesthetic reasons. You might want to dapple the sun to create a romantic pattern of natural light or block it out completely to see the TV. Either way, the weave and colour of the material must match the design of your interior.

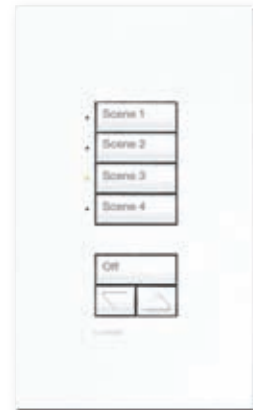
Lutron's bespoke shading systems and range of fabrics not only fit your windows, but the life of your room – open or private, blacked-out or sun-drenched.



# CHOOSING YOUR KEYPADS

## DIMMERS, KEYPADS AND ACCESSORIES

### SEETOUCH



US seeTouch



International seeTouch



International seeTouch – framed



International seeTouch – frameless

### WIRELESS TABLETOP KEYPADS



RF Tabletop keypad†

Designers demand that Lutron's keypads deliver on several criteria. To begin with, the keypad must be aesthetically appealing – sleek and robust, and fitted without unsightly screw heads to spoil the overall effect.

As with any control system, a keypad should be intuitive to use. Every member of your family and all your guests should find it as easy to operate as a conventional light switch. So by engraving the keypad buttons, a child can hit the “TV” button to create the perfect viewing environment.

How many buttons do you need? You may be recalling various lighting ‘scenes’ in different rooms, controlling shades, a motorized projection screen and lights in the garden. In other rooms your requirements might be much simpler. Either way, you have as many or as few buttons as you need – on a single, neat keypad.

We understand that keypads, like other fixtures and fittings, play an important role in the design of any room. Our extensive range of styles, colours and finishes will ensure you never have to compromise.

### RANIA DIMMERS



Rania framed



Rania frameless



UK power socket



EU power socket



Signature series in bright nickel



Architrave



Large Button Keypad

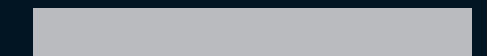


Slim Button Keypad

## AVAILABLE COLOURS



Arctic White



Argentum

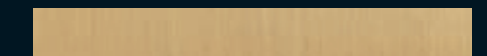


Mica

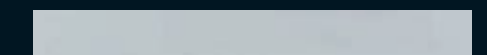
### Metals



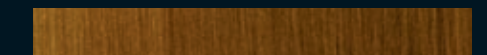
Satin Nickel



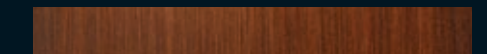
Satin Brass



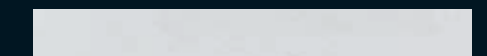
Satin Chrome



Antique Brass



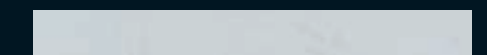
Antique Bronze



Bright Nickel



Bright Brass



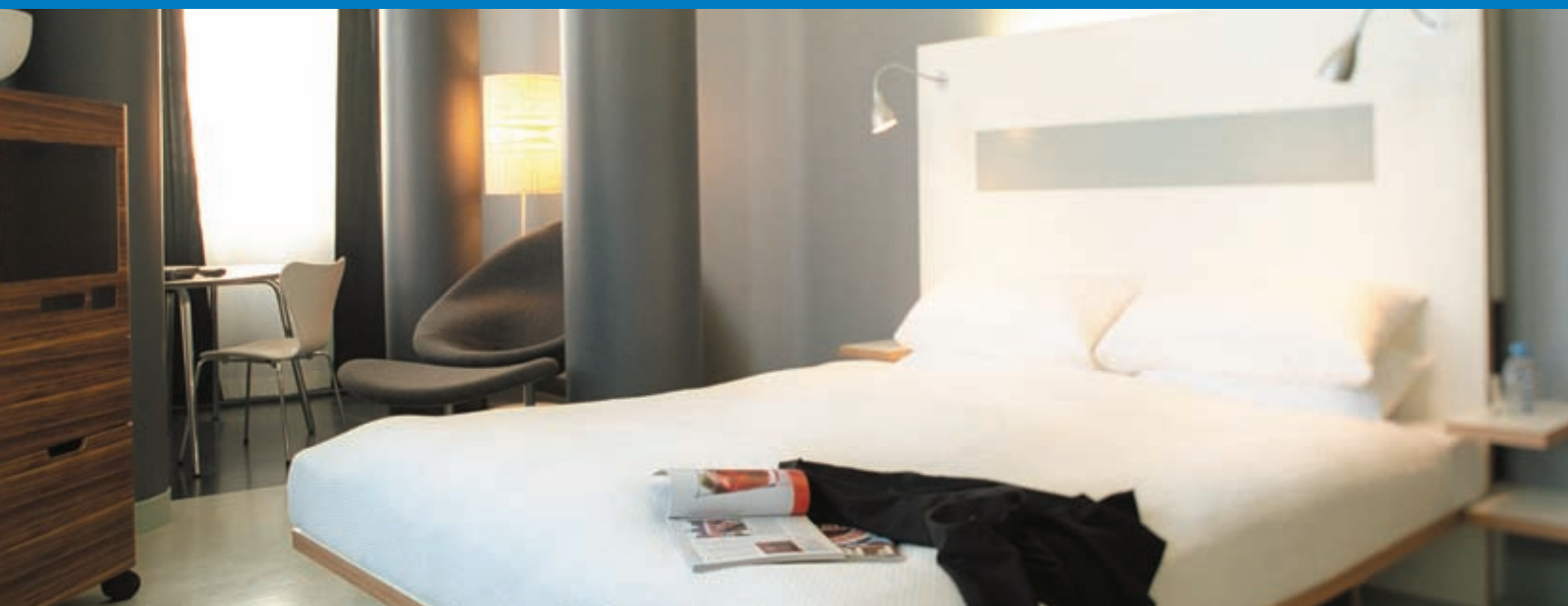
Bright Chrome



Gold Plated\*

\* Custom colour

† Not all keypad styles are compatible with all Lutron systems. Please consult your system designer.



## TALK TO ONE OF OUR SPECIALISTS



Our experience since 1961 has taught us the value of true partnerships with like-minded people to deliver and install our light control systems.

We have built up a worldwide network of such specialists, trained and certified by Lutron to specify the system that will match your needs, install it, and customise it on site. As you would expect, they are experts in every aspect of light control, and also how our products can be integrated with your audio/visual and other domestic systems.

But much more than this, our partners have an understanding of just how important your home is to you. They treat your home as they would their own. And they make it their job to bring your wishes to life.

For a more detailed conversation, please call your nearest regional office, details of which can be found on the back cover.

Lutron® Electronics Co., Inc. reserves the right to alter specifications without notice. Lutron Electronics Co., Inc. has made every effort to ensure the accuracy of information but does not accept liability for any errors or omissions.



Printed on Claro Silk, comprising of fibres sourced from well managed sustainable forests.

### **WORLDWIDE HEADQUARTERS**

Lutron Electronics Co., Inc.  
7200 Suter Road  
Coopersburg, PA 18036-1299  
USA

Toll-free: 1 888 LUTRON1  
TEL: +1 610 282 3800  
FAX: +1 610 282 1243  
intsales@lutron.com

### **EUROPEAN HEADQUARTERS**

Lutron EA Ltd.  
6 Sovereign Close  
London, E1W 3JF  
UK

FREEPHONE: 0800 282 107  
TEL: +44 (0)20 7702 0657  
FAX: +44 (0)20 7480 6899  
lutronlondon@lutron.com

### **ASIAN HEADQUARTERS**

Lutron GL Ltd.  
15 Hoe Chiang Road  
07-03 Euro Asia Centre  
Singapore 089316  
TEL: +65 6220 4666  
FAX: +65 6220 4333  
asiasales@lutron.com

### **INTERNATIONAL OFFICES**

#### **China: Beijing**

TEL: +86 10 5877 1818

#### **China: Hong Kong**

TEL: +852 2104 7733

#### **China: Shanghai**

TEL: +86 21 6288 1473

#### **Dubai**

TEL: +971 4 299 1224

#### **France: Paris**

TEL: +33 1 56 52 93 01

#### **Germany: Berlin**

TEL: +49 (0)30 9710 4590

#### **India: New Delhi**

TEL: +91 11 4051 4300

#### **Italy: Milan**

FREEPHONE: 800 979 208

#### **Japan: Minato-ku**

TEL: +81 3 5575 8411

#### **Singapore**

TEL: +65 6220 4666

#### **Spain: Barcelona**

TEL: +34 93 496 57 42

#### **Spain: Madrid**

TEL: +34 91 567 84 79



[www.lutron.com/europe](http://www.lutron.com/europe)

© 2009 Lutron Electronics Co., Inc. | Made and printed in the UK. | P/N 367-1657/EA